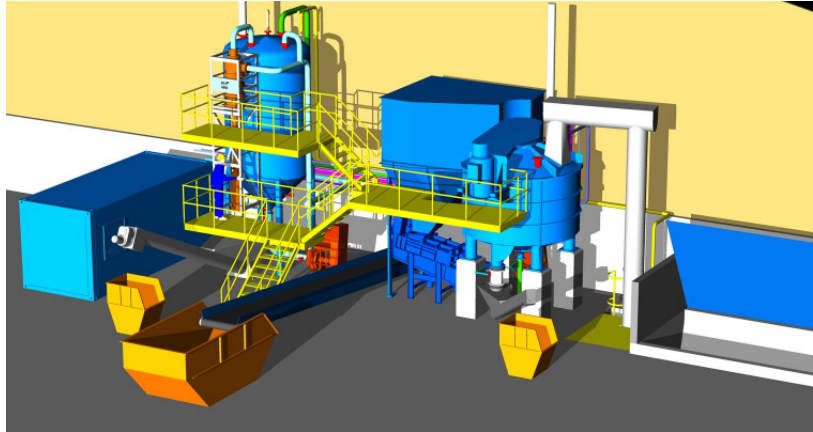


# Project Case Study

## Leoben – Austria



\*model

**Client:**

- LE Gas GmbH

**Materials processed:**

- Biowaste
- Restaurant wastes
- Commercial food wastes
- Sludge of dairies
- Gras cutting

**Capacity:**

- 18.000 tons/year

**Time Schedule:**

- Project start: May 2008
- Expected start-up: January 2009

**Process:**

- Waste reception
- Shreddering of biowaste and gras cutting
- BTA® hydromechanical pre-treatment

The obtained organic suspension will be digested in the digesters of the wastewater treatment plant Leoben

**Scope of BTA:**

- Reception bunker and screw conveyor system
- Screw mill
- BTA® hydromechanical pre-treatment
- BTA® Process Control System
- Engineering services
- Assembly and start-up